

DOOR SCHEDULE						
NO.	SIZE	TYPE	DESCRIPTION	CASING	OUT	QTY
1	3'-0" x 6'-8"	EXT	6 panel with 1"2" sidelights and 18" transom	B-P	B-P	1
2	2'-8" x 6'-8"	EXT	six panel	B-P	B-P	1
3	2'-6" x 6'-8"	EXT	french with 1'0" trench	B-P	1 x 4 w/BB	1
4	9'-0" x 7'-6"	EXT	paneled garage	B-P	1 x 4 w/BB	2
5	2'-6" x 6'-8"	INT	six panel	B-P	B-P	8
6	2'-4" x 6'-8"	INT	six panel	B-P	B-P	7
7	2'-4"	INT	glass shower			1
8	2'-0" x 6'-8"	INT	six panel	B-P	B-P	2
9	2x2'-0" x 6'-8"	INT	double six panel	B-P	B-P	5
10	1'-8" x 6'-8"	INT	paneled	B-P	B-P	1
11	2'-1'3" x 6'-8"	INT	double paneled	B-P	B-P	2
12	2'-6" x 6'-8"	EXT	french	B-p	1 x 4 w/BB	1
13	2'-8" x 6'-8"	INT	six panel	B-p	B-p	2

LEGEND	
BB	Back Band
BM	Brick Mould
A,B,C	Type of Casting
P	Paint
S	Stain
Note: See Sheet 7 for Casting Profiles	

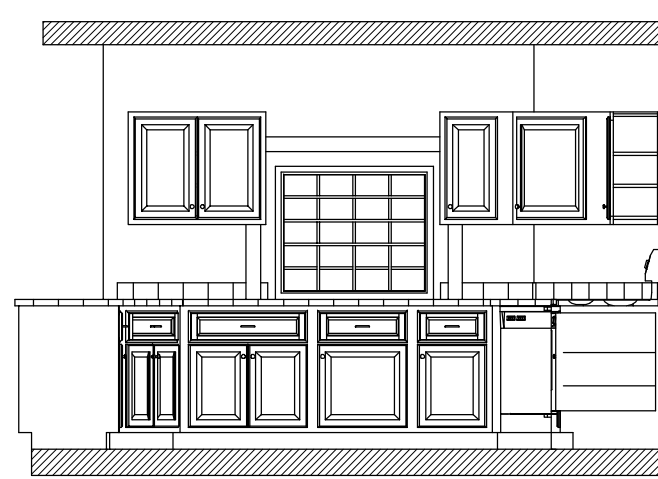
WINDOW SCHEDULE				
TYPE	SIZE	EXTERIOR CASING	DESCRIPTION	QTY
A	4'-0" x 6'-10"	2 x 4 w/BB	Stat w/ 2'0" x 6'0" D.H. sidelites	1
B	4'-0" x 6'-10"	2 x 4 w/BB	Stat w/ 2'0" x 6'0" csmt. sdltis.	1
C	4'-0" x 4'-2"	2 x 4 w/BB	Stat.	1
D	3'-0" x 4'-2"	2 x 4 w/BB	Double Hung	2
E	2'-8" x 5'-2"	2 x 4 w/BB	Double Hung	6
F	2x2'-8" x 6'-10"	2 x 4 w/BB	Double Hung w/ 4" mull	1
G	2'-8" x 4'-2"	2 x 4 w/BB	Double Hung	1
H	2'-8" x 6'-0"	2 x 4 w/BB	Stat w/ 2'0" x 6'0" csmt. sidelites	1
I	2x2'-8" x 5'-2"	2 x 4 w/BB	Double Hung w/ 4" mull	4
J	2'-4" x 3'-2"	2 x 4 w/BB	Double Hung	3
K	2'-4" x 6'-10"	2 x 4 w/BB	Double Hung	3
L	2'-4" x 5'-2"	2 x 4 w/BB	Double Hung	3
M	3'-0" x 3'-2"	2 x 4 w/BB	Double Hung	1
N	4'-0" x 5'-2"	2 x 4 w/BB	Stat w/ 2'0" x 5'2" D.H. sidelites	1
O	1'-8" x 2'-8"	2 x 4 w/BB	Casement	1

LEGEND	
BB	Back Band
DH	Double Hung
BM	Brick Mould

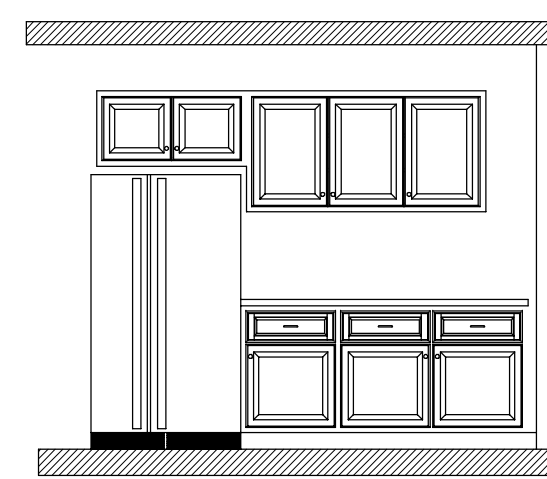
Electrical Plan Key	
[Symbol]	Duplex Convenience Outlet
[Symbol]	Duplex Outlet Above Counter
[Symbol]	Weatherproof Duplex Outlet
[Symbol]	Half-switched Duplex Outlet
[Symbol]	Special Purpose Outlet
[Symbol]	Duplex Outlet in Floor
[Symbol]	220 Volt Outlet
[Symbol]	Electric Door Operator
[Symbol]	Ceiling Mounted Incandescent Light Fixture
[Symbol]	Wall Mounted Incandescent Light Fixture
[Symbol]	Recessed Incandescent Light Fixture
[Symbol]	Exhaust Fan
[Symbol]	Exhaust Fan/ Light Combination
[Symbol]	Fluorescent Light Fixture
[Symbol]	Ceiling Fan/ Light

SQUARE FOOTAGE BREAKDOWN	
FIRST FLOOR	1220 s.f.
SECOND FLOOR	1325 s.f.
TOTAL	2545 s.f.
NOT INCLUDED	
TWO STOREY	80 s.f.

NOTES:
 9'-0" CLG.HGT.1ST FLOOR
 8'-0" CLG.HGT.2ND FLOOR
 O.F.S.: OUTFACE OF STUD
 O.F.M.: OUTFACE OF MASONRY

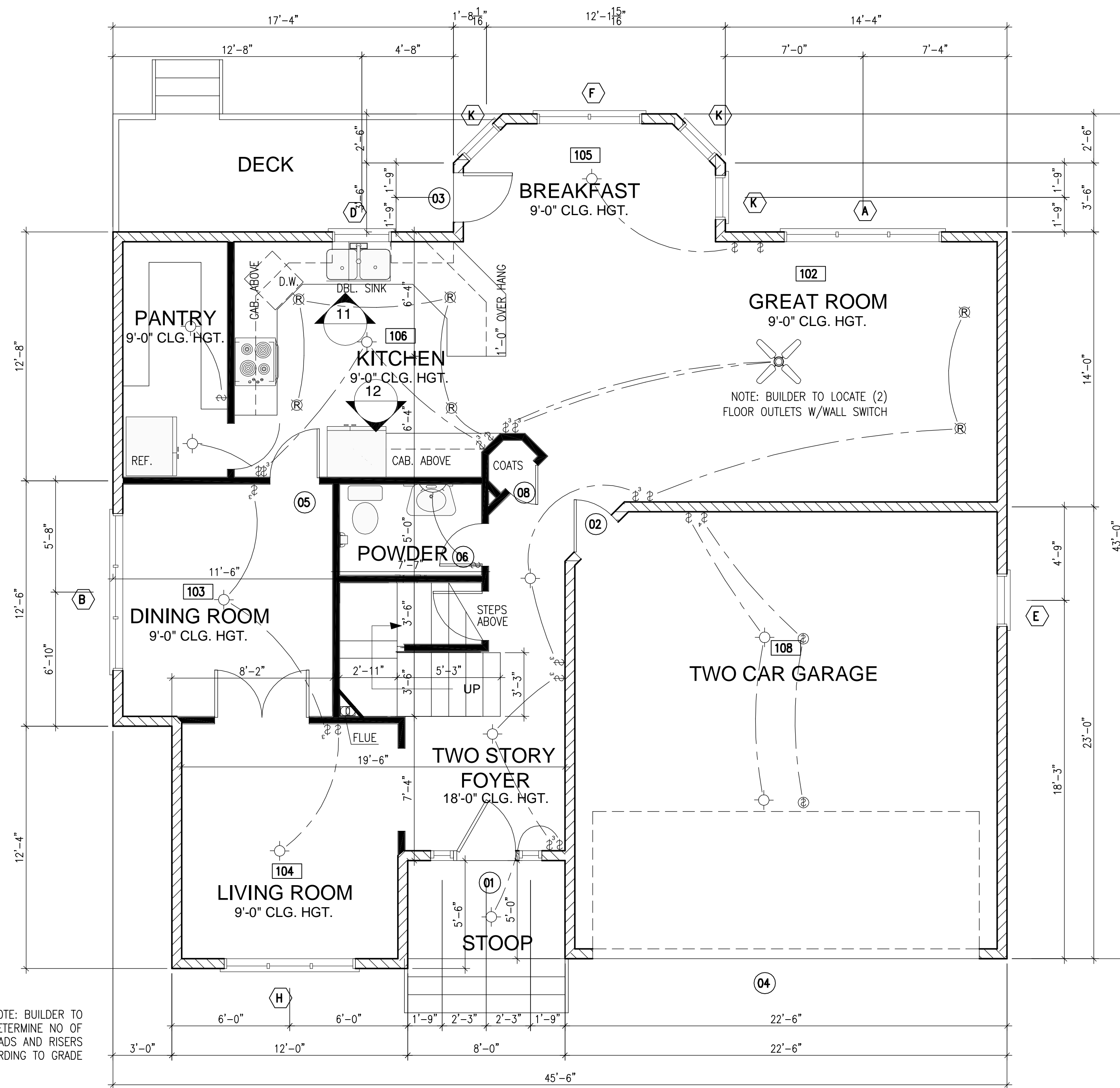


11 KITCHEN FACING INTERIOR
D2



12 KITCHEN FACING DINING ROOM
D2

NOTE: BUILDER TO DETERMINE NO OF TREADS AND RISERS ACCORDING TO GRADE



FIRST FLOOR PLAN

SCALE: 1/4"=1'-0"

#	REVISION /ISSUE	DATE

CONSTRUCTION NORTH TRUE NORTH

cadaxx design
 416.628.4851
 14 Antibes Dr., Toronto, ON M2R 3K3
 www.cadaxx.com | info@cadaxx.com

DRAWING

PROJECT:
Mark's House
 FIRST FLOOR PLAN

SCALE	
DRAWN	A.A.
CHECKED	
DATE	JUNE, 2006

PROJECT NO.	SHEET NO.
	D2

DOOR SCHEDULE							
NO.	SIZE	TYPE	DESCRIPTION	CASING	IN	OUT	QTY
1	3'-0" x 6'-8"	EXT	6 panel with 1'2" sidelights and 1'8" transom	B-P	B-P	1 x 4 w/BB	1
2	2'-8" x 6'-8"	EXT	six panel	B-P	B-P		1
3	2'-6" x 6'-8"	EXT	french with 1'0" trench	B-P	B-P	1 x 4 w/BB	1
4	9'-0" x 7'-6"	EXT	paneled garage	B-P	B-P	1 x 4 w/BB	2
5	2'-6" x 6'-8"	INT	six panel	B-P	B-P		8
6	2'-4" x 6'-8"	INT	six panel	B-P	B-P		7
7	2'-4"	INT	glass shower				1
8	2'-0" x 6'-8"	INT	six panel	B-P	B-P		2
9	2x2'-0" x 6'-8"	INT	double six panel	B-P	B-P		5
10	1'-8" x 6'-8"	INT	paneled	B-P	B-P		1
11	2'-1'3" x 6'-8"	INT	double paneled	B-P	B-P		2
12	2'-6" x 6'-8"	EXT	french	B-p	B-p	1 x 4 w/BB	1
13	2'-8" x 6'-8"	INT	six panel	B-p	B-p		2

LEGEND	
BB	Back Band
BM	Brick Mould
A,B,C	Type of Casting
P	Paint
S	Stain
Note: See Sheet 7 for Casting Profiles	

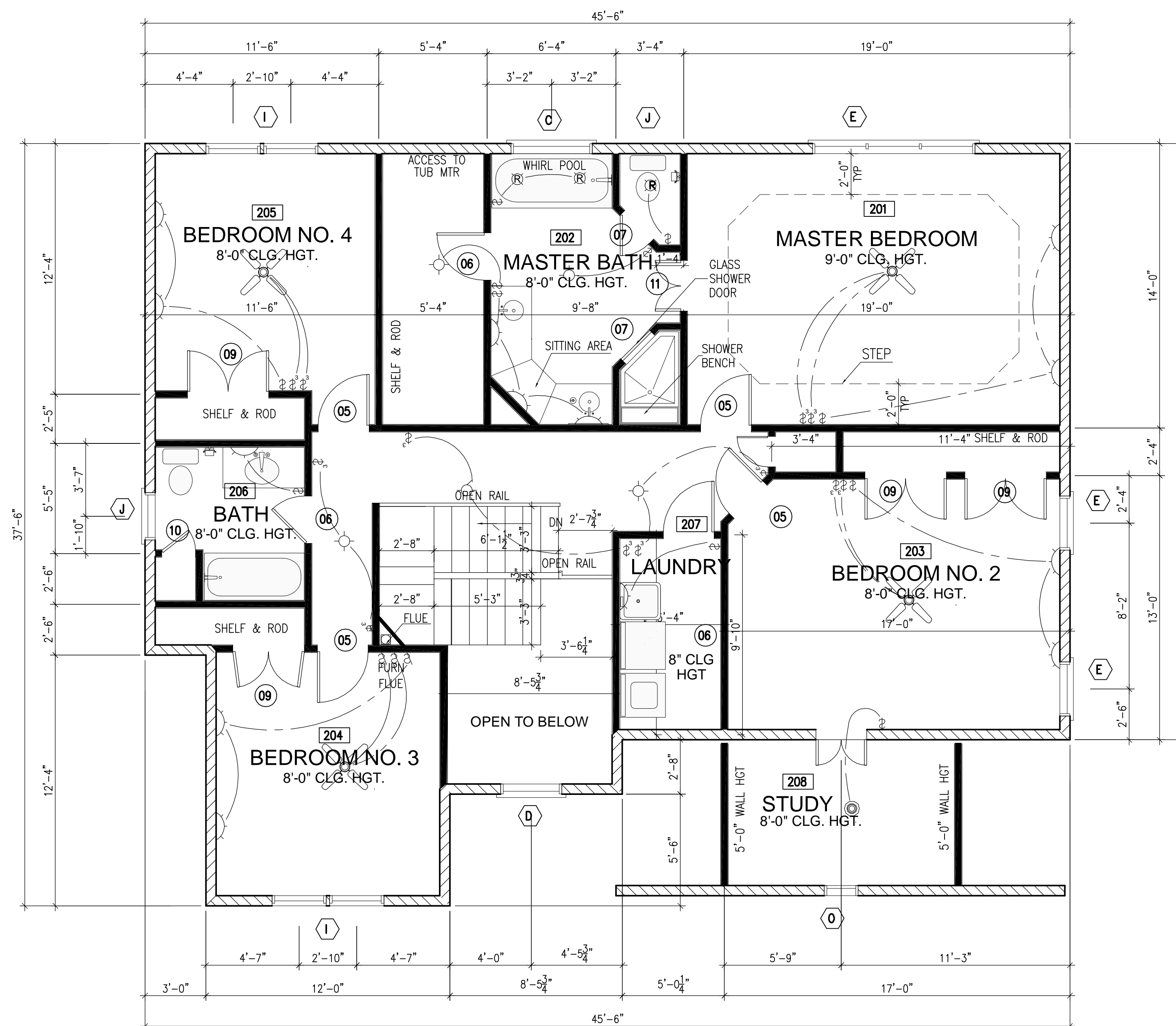
WINDOW SCHEDULE				
TYPE	SIZE	EXTERIOR CASING	DESCRIPTION	QTY
A	4'-0" x 6'-10"	2 x 4 w/BB	Stat w/ 2'0" x 6'0" D.H. sidelites	1
B	4'-0" x 6'-10"	2 x 4 w/BB	Stat w/ 2'0" x 6'0" casml. sdllts.	1
C	4'-0" x 4'-2"	2 x 4 w/BB	Stat.	1
D	3'-0" x 4'-2"	2 x 4 w/BB	Double Hung	2
E	2'-8" x 5'-2"	2 x 4 w/BB	Double Hung	6
F	2x2'-8" x 6'-10"	2 x 4 w/BB	Double Hung w/ 4" mull	1
G	2'-8" x 4'-2"	2 x 4 w/BB	Double Hung	1
H	2'-8" x 6'-0"	2 x 4 w/BB	Stat w/ 2'0" x 6'0" casml. sidelites	1
I	2x2'-8" x 5'-2"	2 x 4 w/BB	Double Hung w/ 4" mull	4
J	2'-4" x 3'-2"	2 x 4 w/BB	Double Hung	3
K	2'-4" x 6'-10"	2 x 4 w/BB	Double Hung	3
L	2'-4" x 5'-2"	2 x 4 w/BB	Double Hung	3
M	3'-0" x 3'-2"	2 x 4 w/BB	Double Hung	1
N	4'-0" x 5'-2"	2 x 4 w/BB	Stat w/ 2'0" x 5'2" D.H. sidelites	1
O	1'-8" x 2'-8"	2 x 4 w/BB	Casement	1

LEGEND	
BB	Back Band
DH	Double Hung
BM	Brick Mould

Electrical Plan Key	
[Symbol]	Duplex Convenience Outlet
[Symbol]	Duplex Outlet Above Counter
[Symbol]	Weatherproof Duplex Outlet
[Symbol]	Half-switched Duplex Outlet
[Symbol]	Special Purpose Outlet
[Symbol]	Duplex Outlet in Floor
[Symbol]	220 Volt Outlet
[Symbol]	Electric Door Operator
[Symbol]	Ceiling Mounted Incandescent Light Fixture
[Symbol]	Wall Mounted Incandescent Light Fixture
[Symbol]	Recessed Incandescent Light Fixture
[Symbol]	Exhaust Fan
[Symbol]	Exhaust Fan/ Light Combination
[Symbol]	Fluorescent Light Fixture
[Symbol]	Ceiling Fan/ Light

SQUARE FOOTAGE BREAKDOWN	
FIRST FLOOR	1220 s.f.
SECOND FLOOR	1325 s.f.
TOTAL	2545 s.f.
TWO STOREY NOT INCLUDED 80 s.f.	

NOTES:	
9'-0" CLG.HGT. 1ST FLOOR	
8'-0" CLG.HGT. 2ND FLOOR	
O.F.S.: OUTFACE OF STUD	
O.F.M.: OUTFACE OF MASONRY	



SECOND FLOOR PLAN

SCALE: 1/4"=1'-0"

#	REVISION /ISSUE	DATE

CONSTRUCTION NORTH TRUE NORTH

cadaxx design
 416.628.4851
 14 Antibes Dr., Toronto, ON M2R 3K3
 www.cadaxx.com | info@cadaxx.com

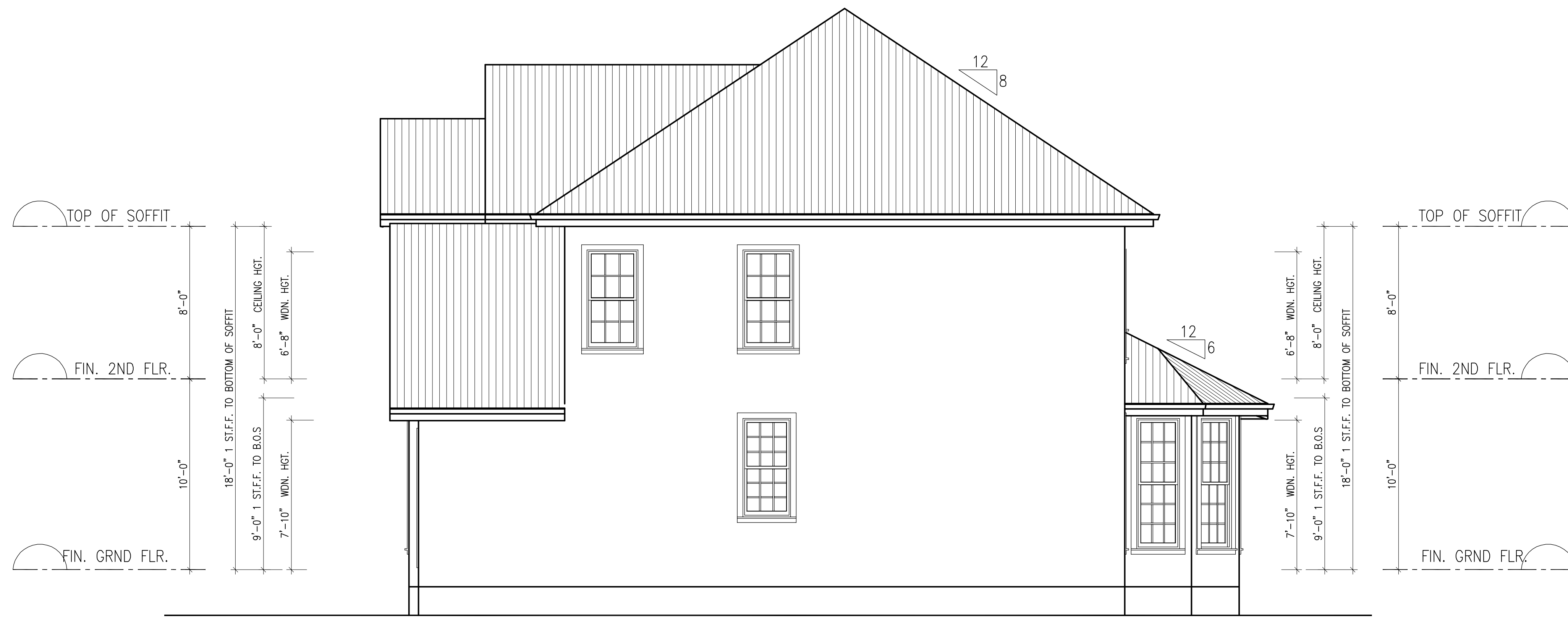
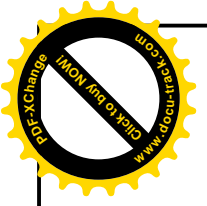
DRAWING

PROJECT:
Mark's House

SECOND FLOOR PLAN

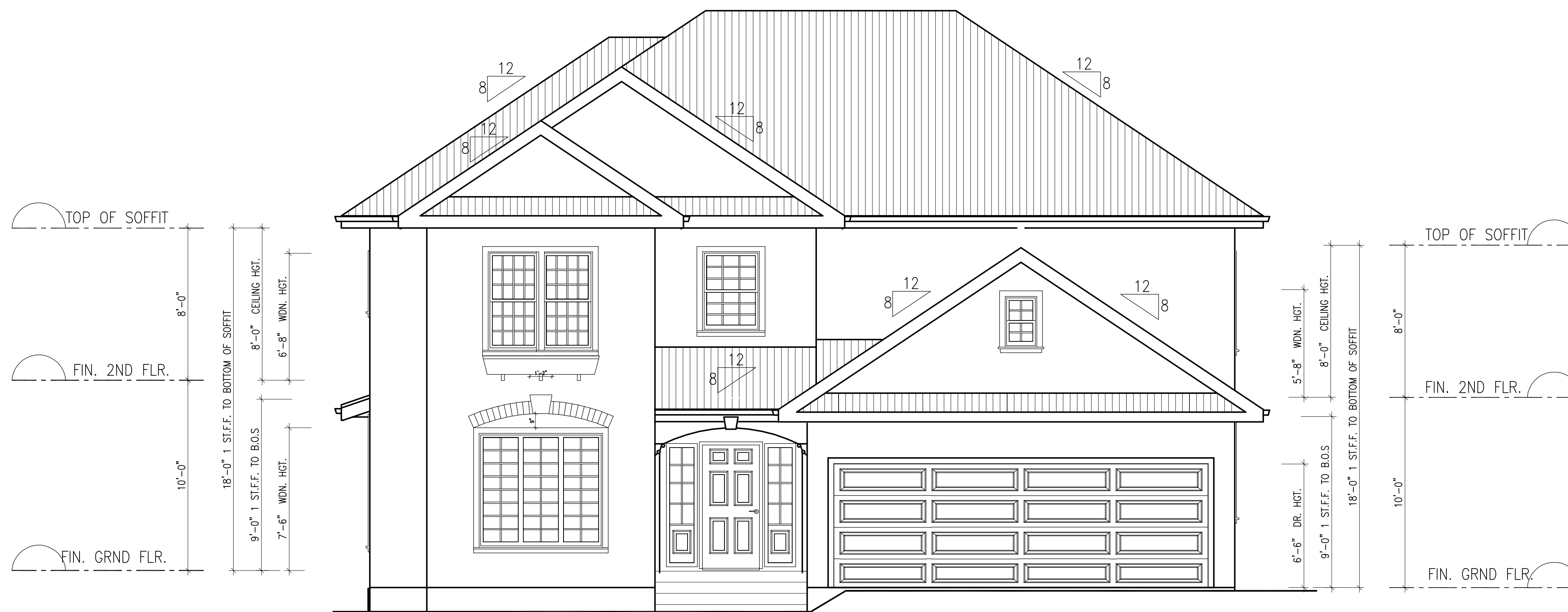
SCALE	
DRAWN	A.A.
CHECKED	
DATE	JUNE, 2006

PROJECT NO. SHEET NO.
D3



RIGHT SIDE ELEVATION

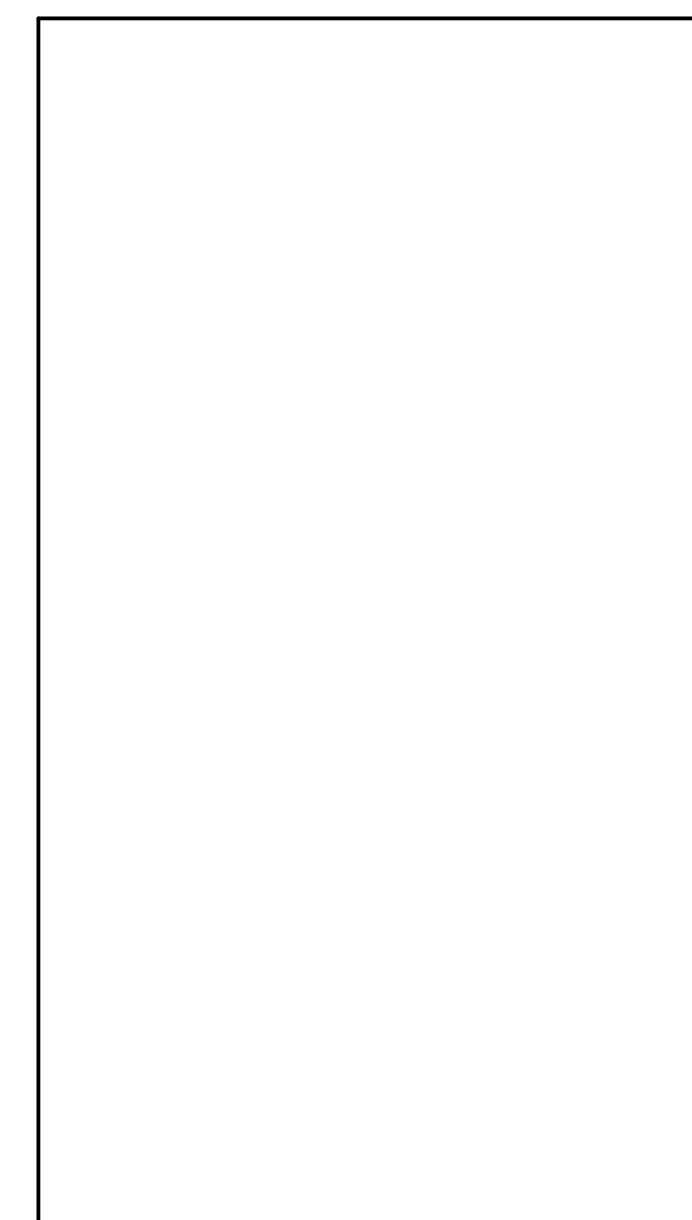
SCALE: 1/4"=1'-0"



FRONT ELEVATION

SCALE: 1/4"=1'-0"

#	REVISION /ISSUE	DATE



CONSTRUCTION NORTH TRUE NORTH

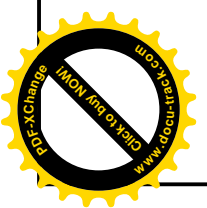
cadaxx design
416.628.4851
14 Antibes Dr., Toronto, ON M2R 3K3
www.cadaxx.com info@cadaxx.com

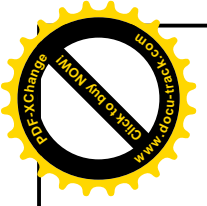
DRAWING

PROJECT:
Mark's House
ELEVATIONS

SCALE	
DRAWN	A.A.
CHECKED	
DATE	JUNE, 2006

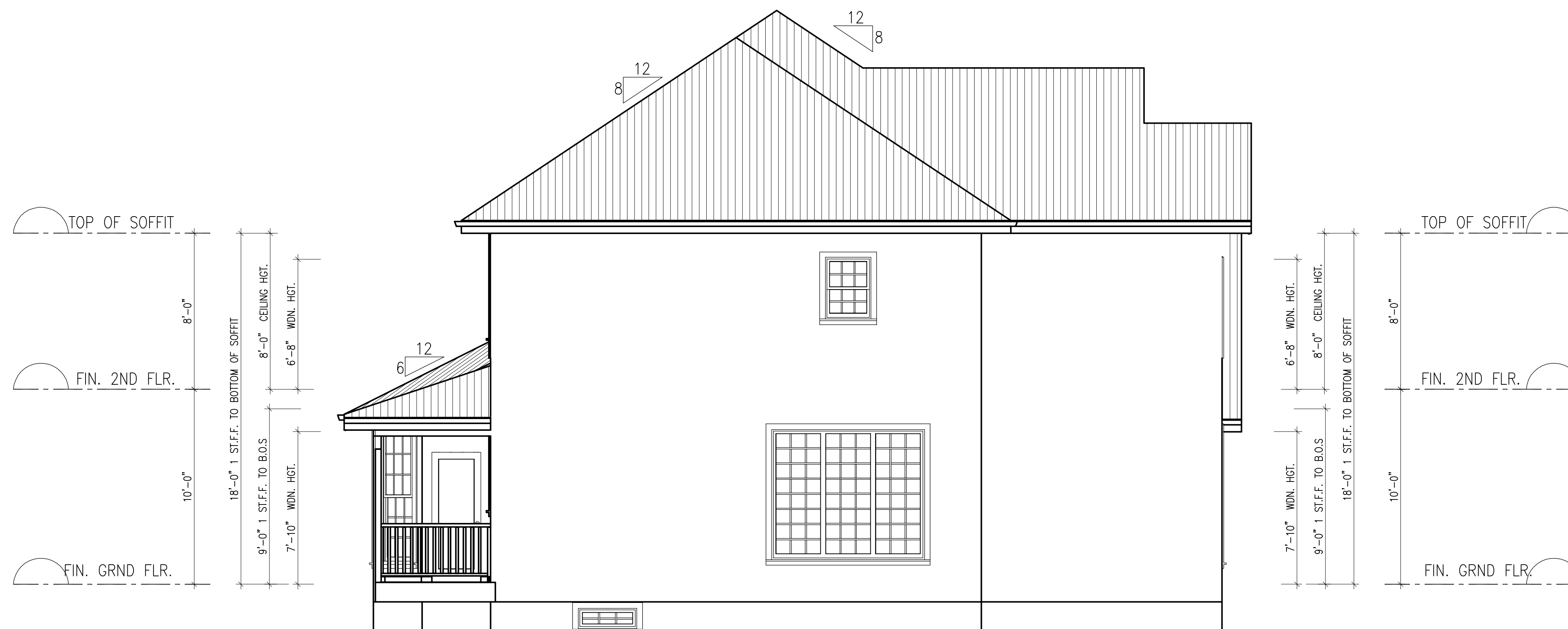
PROJECT NO. SHEET NO.
D5





REAR ELEVATION

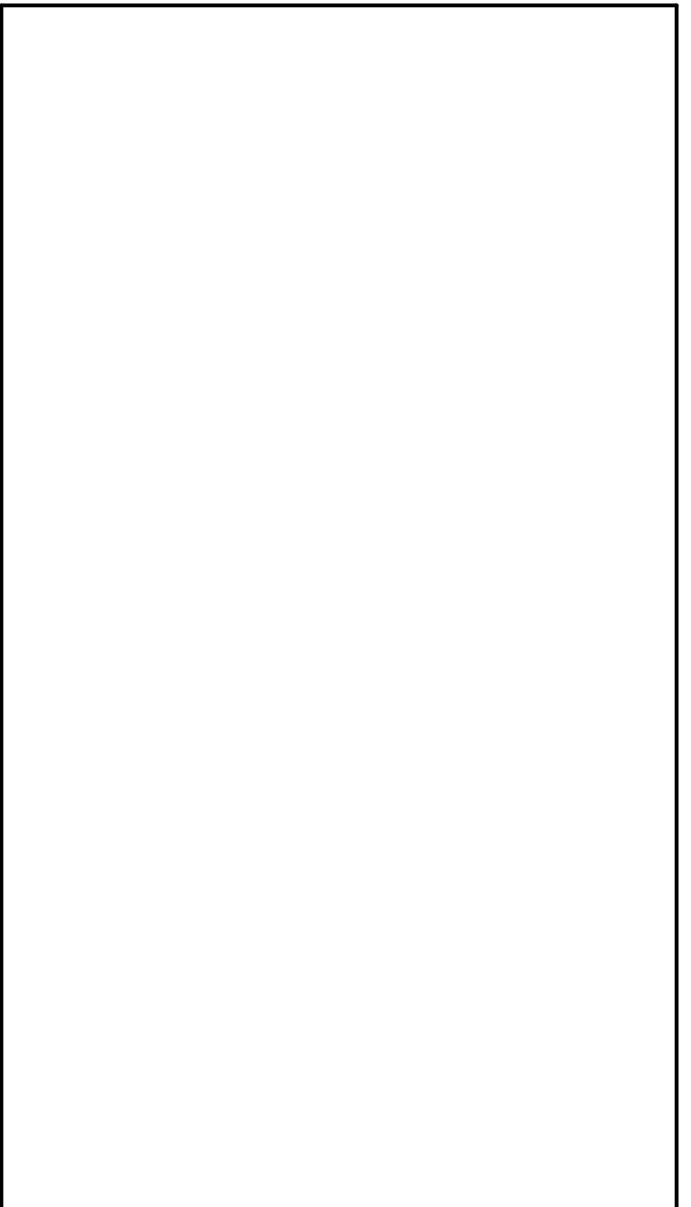
SCALE: 1/4"=1'-0"



LEFT SIDE ELEVATION

SCALE: 1/4"=1'-0"

#	REVISION /ISSUE	DATE



CONSTRUCTION NORTH TRUE NORTH

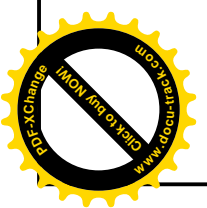
cadaxx design
416.628.4851
14 Antibes Dr., Toronto, ON M2R 3K3
www.cadaxx.com info@cadaxx.com

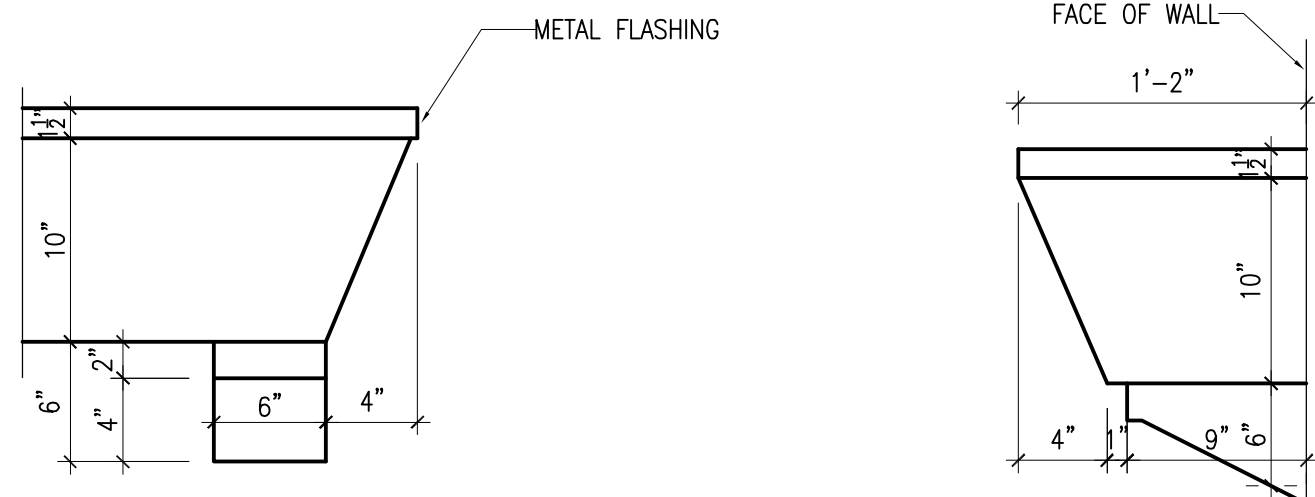
DRAWING

PROJECT:
Mark's House
ELEVATIONS

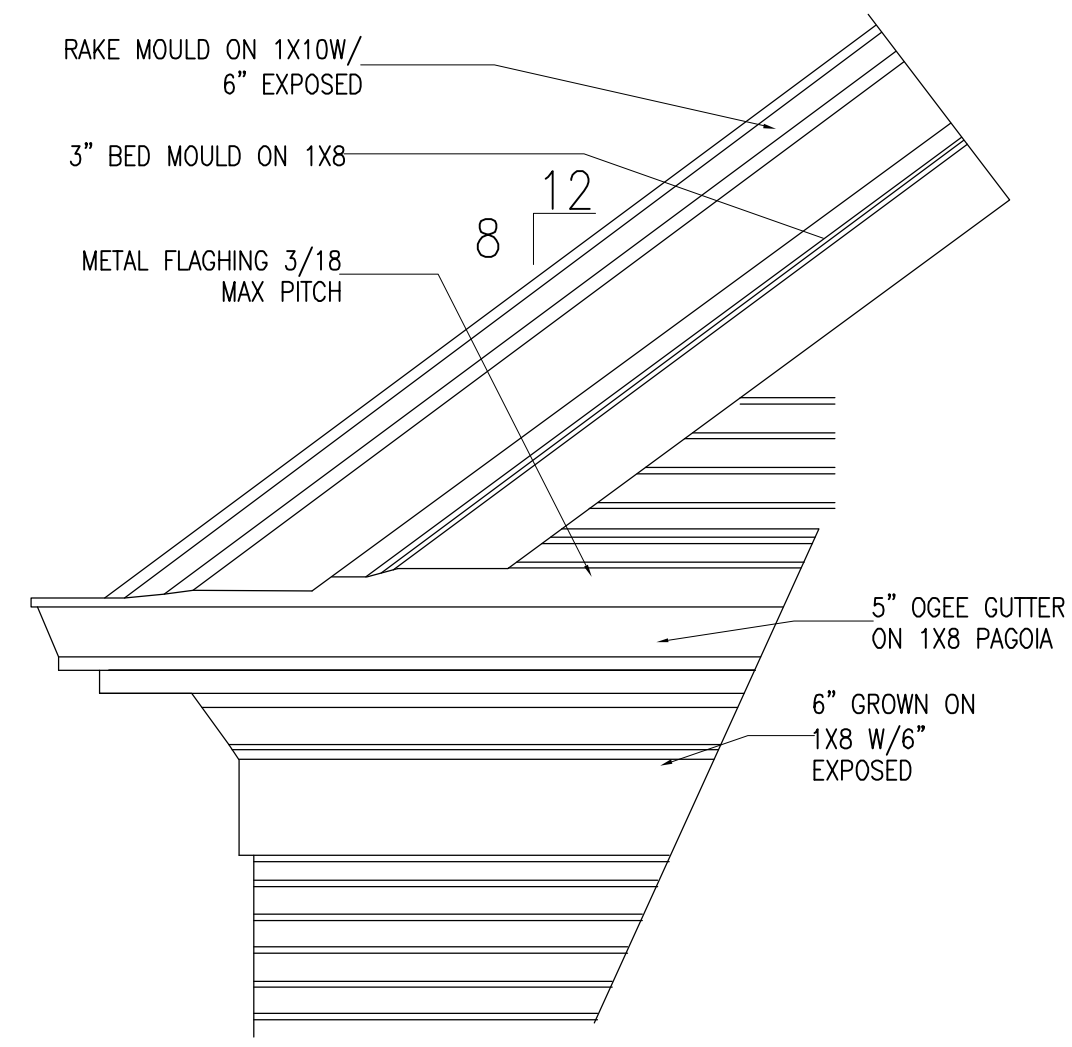
SCALE	
DRAWN	A.A.
CHECKED	
DATE	JUNE, 2006

PROJECT NO. SHEET NO.
D6

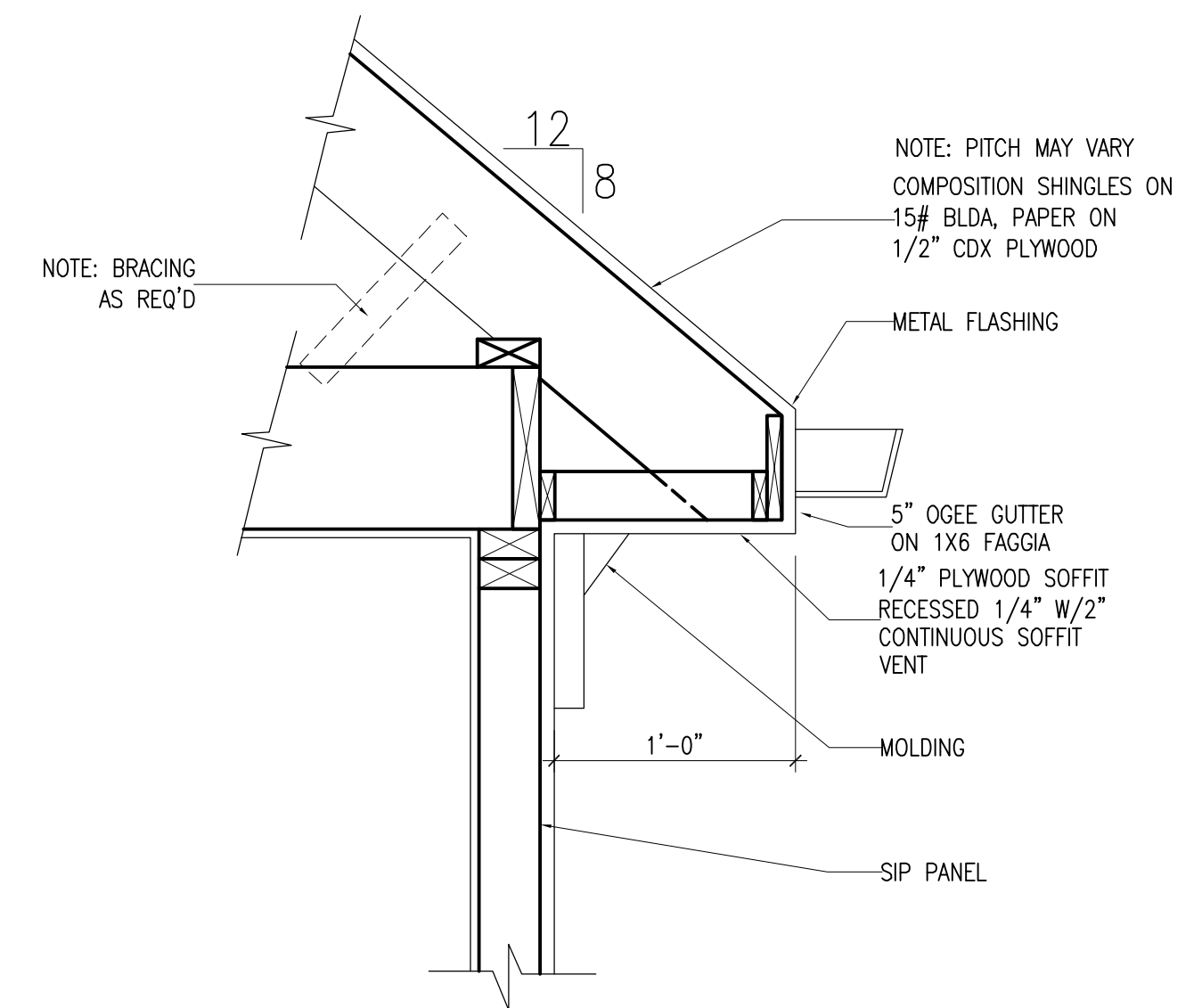




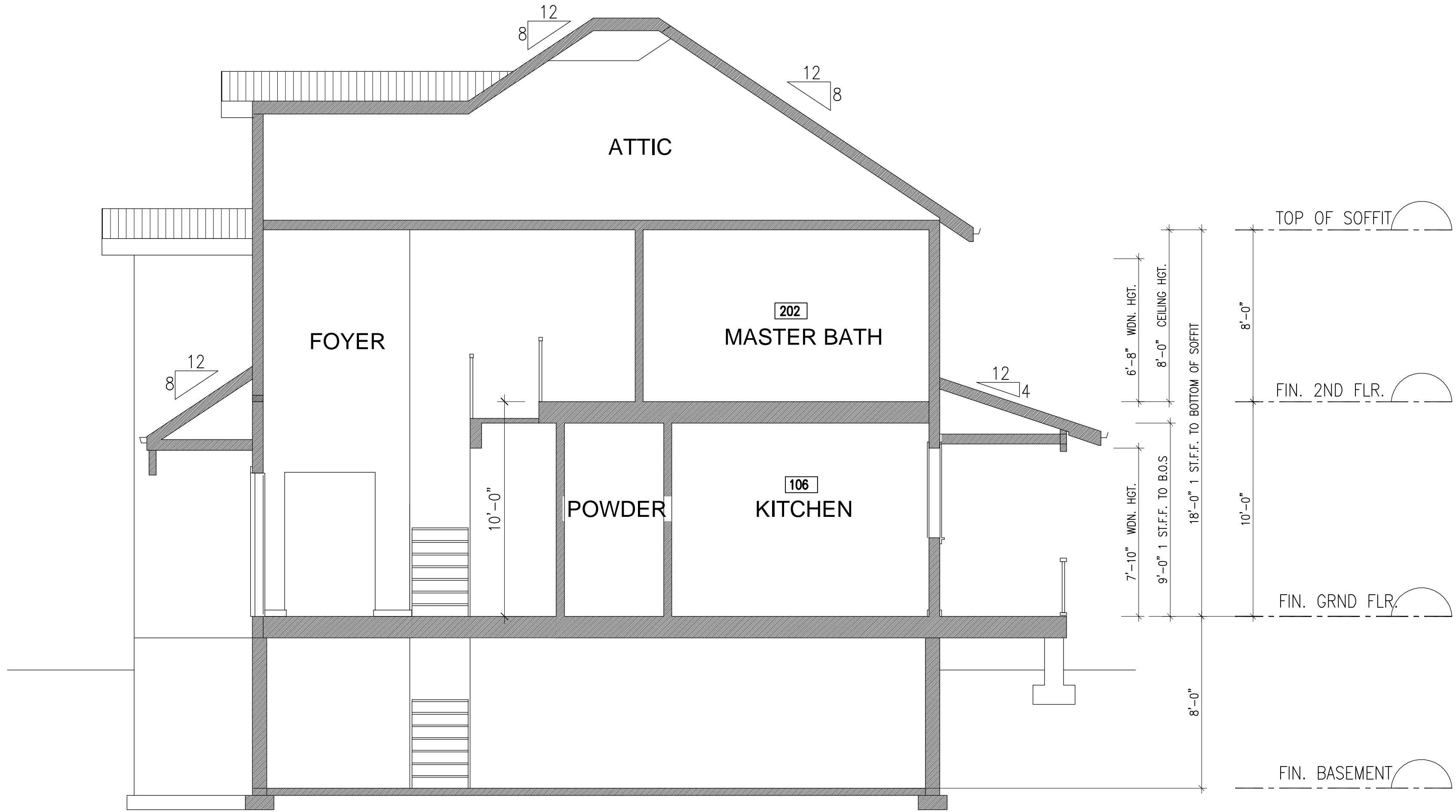
FLOWER BOX DETAIL



TYPICAL RAKE RETURN



TYPICAL CORNICE



TRANSVERSE BUILDING SECTION

SCALE: 1/4"=1'-0"

#	REVISION /ISSUE	DATE

CONSTRUCTION NORTH TRUE NORTH

cadaxx design
416.628.4851
14 Antilles Dr., Toronto, ON M2R 3K3
www.cadaxx.com info@cadaxx.com

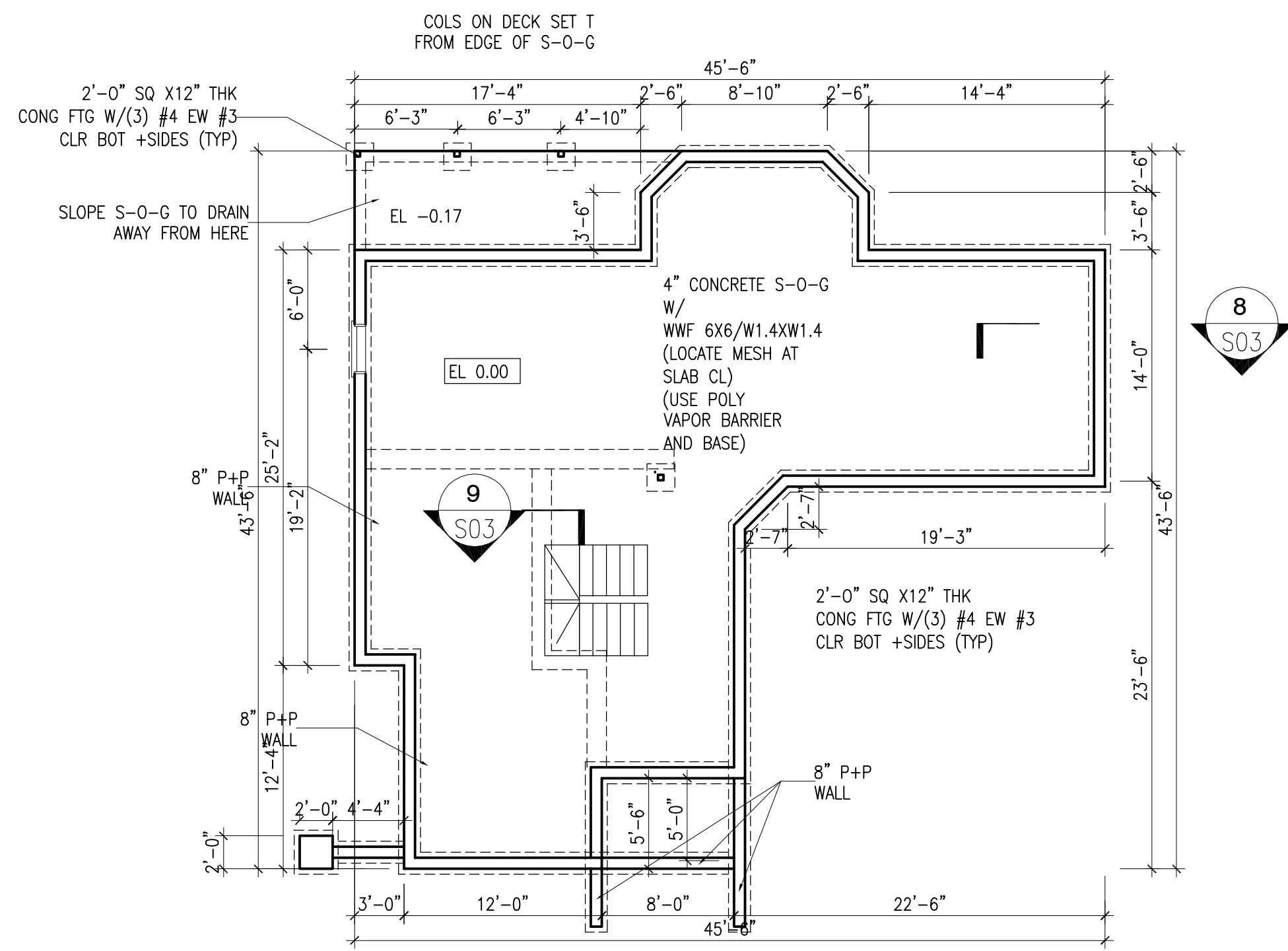
DRAWING

PROJECT:
Mark's House

SECTION, DETAILS

SCALE	
DRAWN	A.A.
CHECKED	
DATE	JUNE, 2006

PROJECT NO. SHEET NO.
D7

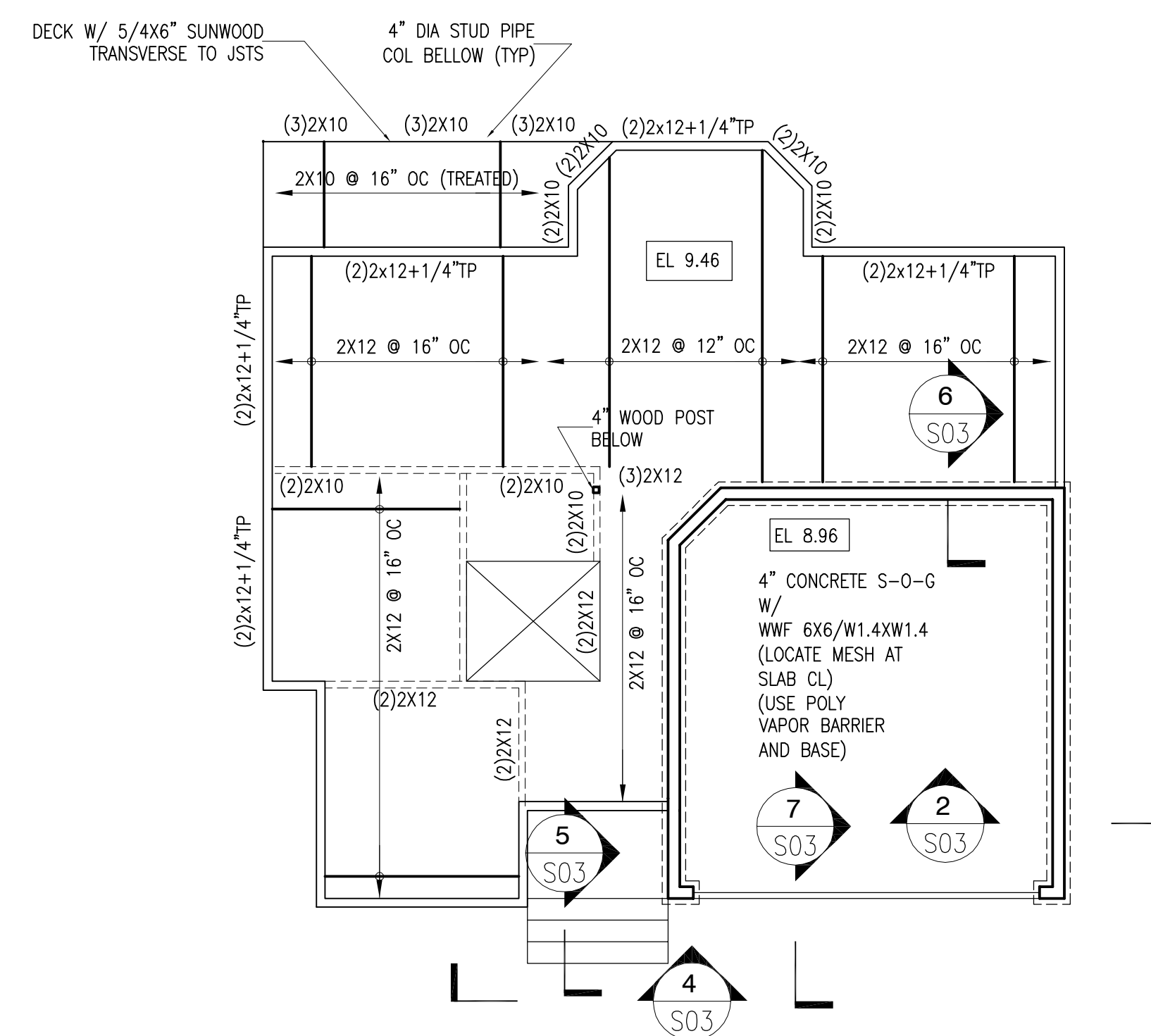


1 FOUNDATION PLAN
SCALE: 1/8"=1'-0" BASEMENT LEVEL

ALL P+P WALLS 12" THICK UON
SEE SECTIONS FOR REINFORCEMENT AND HEAD CONFIGURATION

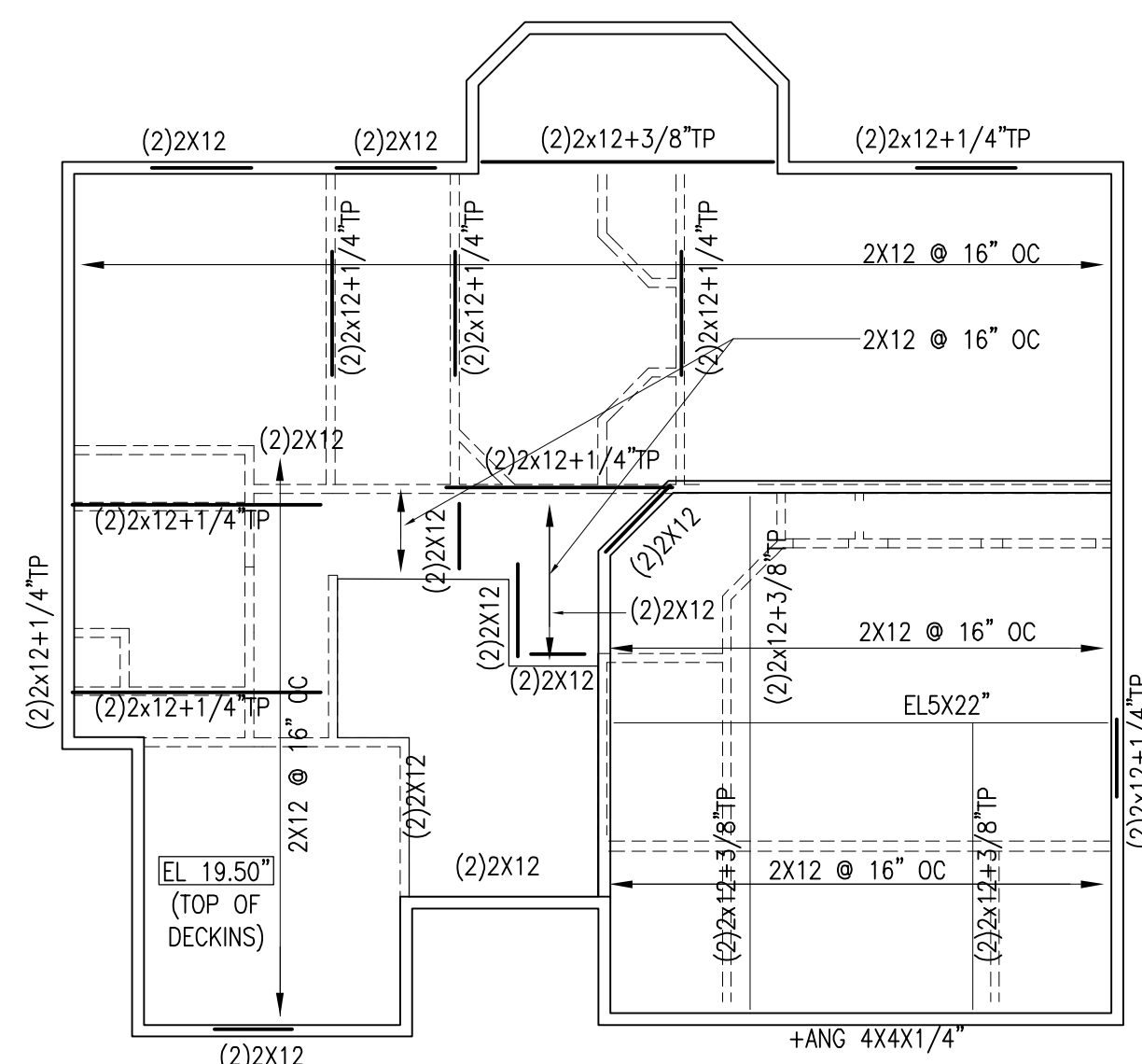
ALL PARTITIONS AT PERIMETER AND AT INTERIOR LB WALL 2X6 @ 16" OC THIS LEVEL
ALL OTHER PARTITIONS 2X4 @ 16" OC THIS LEVEL

SEE ARCH FOR LOCATIONS OF ALL INTERIOR PARTITIONS W/ THICKENED SLABS BELOW



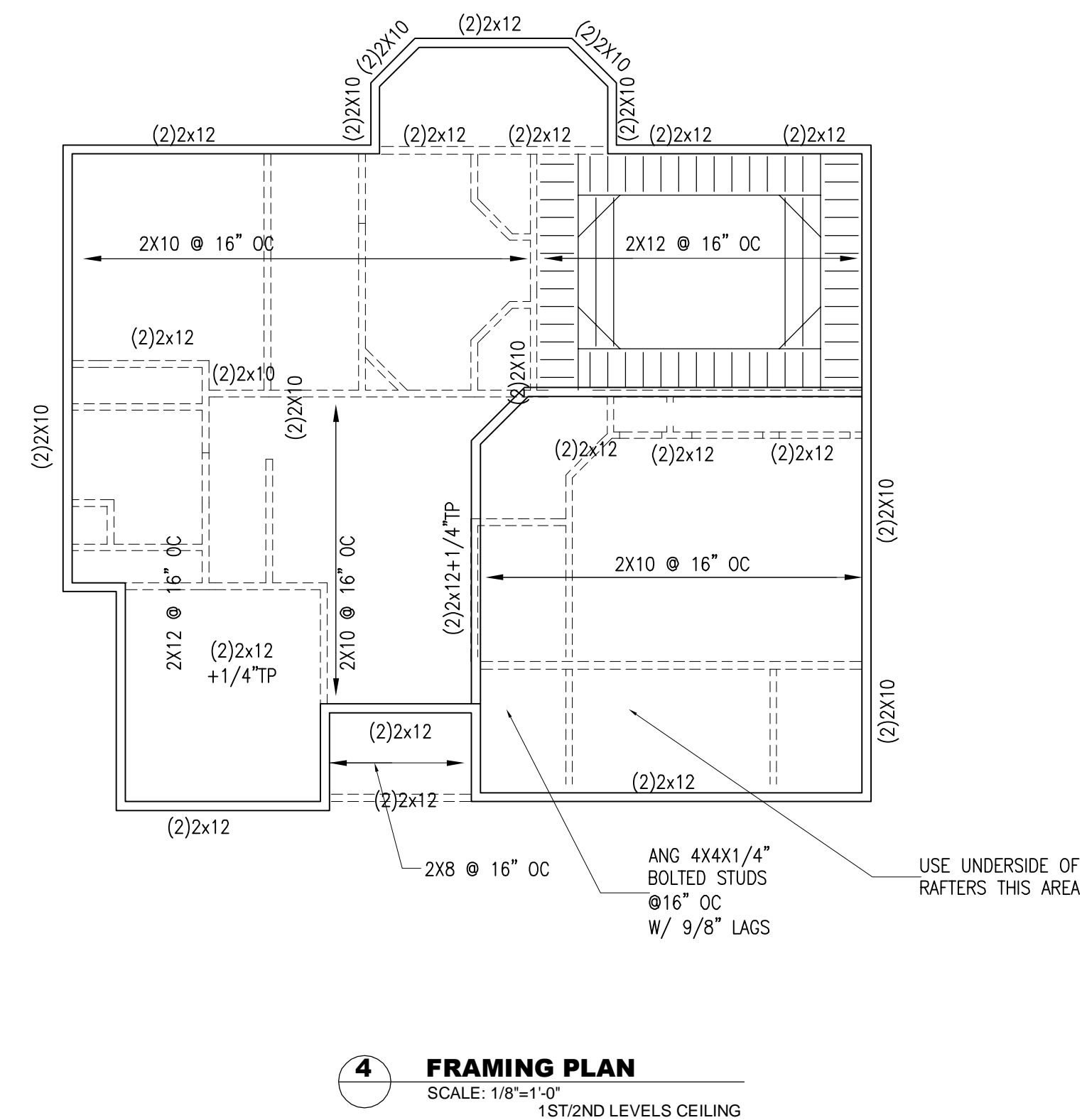
2 FRAMING PLAN
SCALE: 1/8"=1'-0" 1ST LEVEL

ALL FLOORS JOISTS THIS LEVEL 2X12 @ 16" OC (UON)
ALL INT HEADERS THIS LEVEL (2)2X10 (UON)



3 FRAMING PLAN
SCALE: 1/8"=1'-0" 2ST LEVEL

ALL FLOORS JOISTS THIS LEVEL 2X12 @ 16" OC (UON)
ALL INT HEADERS THIS LEVEL (2)2X10 (UON)



4 FRAMING PLAN
SCALE: 1/8"=1'-0" 1ST/2ND LEVELS CEILING

ALL FLOORS JOISTS THIS LEVEL 2X12 @ 16" OC (UON)
ALL INT HEADERS THIS LEVEL (2)2X10 (UON)

#	REVISION /ISSUE	DATE

CONSTRUCTION NORTH TRUE NORTH

cadaxx design
416.628.4851
14 Antibes Dr., Toronto, ON M2R 3K3
www.cadaxx.com info@cadaxx.com

DRAWING

PROJECT:
Mark's House

STRUCTURAL PLANS

SCALE	
DRAWN	A.A.
CHECKED	
DATE	JUNE, 2006

PROJECT NO. SHEET NO.
S1

FOUNDATION NOTES:

ALL CONCRETE 3000 PSI @ 28 DAYS W/ #57 STONE AGGREGATE

ALL REINFORCING STEEL 60 KSI

ALL ANCHOR BOLTS A36

3" CLR TO BOT AND SIDES OF FTG WHERE SOIL IS USED AS A FROM

1 1/2" CLR TO RENF STEEL WHERE MAT LOCATED ON OUTSIDE FACE OF WALL

3/4" CLR TO RENF STEEL WHERE MAT LOCATED ON INSIDE FACE OF WALL

FTGS DESIGNED FOR SOIL BEARINGS PRESSURE OF 3000 PSF OR GREATER

FTGS SHOULD BE REVIEWED AND REDESIGNED IF SPP IS LESS THAN 3000 PSF

WHERE PPES PASS THROUGH FTG USE 1ST COMPARABLE MATERIAL AROUND PIPE

BRACE ALL WALLS DESIGNED AS BASEMENT WALLS (WALLS REQUIRING FRAMING OR S-O-G TO SPAN FROM FTG TO TOP OF WALL) UNTIL FRAMING OR S-O-G IS IN PLACE. DO NOT BACKFILL WITHOUT BRACING OR SUPPORT AT TOP OF WALL

USE (1) CORNER BAR FOR EACH PIECE OF CONT RENF STEEL (LAP EW (30) BAR DIAMETERS)

SOILS HAVE 98% STD PROCTOR UNDER FTGS AND 95% STD PROCTOR UNDER S-O-G'S

WWF SHALL CONFORM TO ASTM A-82 A-182 AND LAP 6" MIN AT ALL SPLICES

ALL RENF STEEL LAPS SHALL BE (30) BAR DIAMETER (MIN)

USE MIN 12" COVER OVER FTGS AND LOCATE ALL FTGS ACCORDING TO LOCAL FROST LINE REQUIREMENTS

ALL CONSTRUCTION ON FILLS SHALL BE REVIEWED BY A REGISTERED SOIL'S ENGINEER

USE SAWN OR FORMED CONTROL JOINTS IN S-O-G'S AT APPROXIMATELY 800 SF INTERVALS LOCATE JOINTS TO KEEP THE LENGHT NO MORE THAN TWICE THE WIDTH OF EACH PANEL

USE STEPS IN FTG (2'-0"/STEPS) TO CHANGE ELEVATIONS (STEEL TO BE CONTINUOUS/LAPPED)

FRAMING NOTES:

ALL FLOOR JOISTS, CEILING JOISTS, AND ROOF RAFTERS TO BE #2 SYP KD 19% MC (UON)

ALL EL (ELU-LAMS) TO BE 2400 PSI SYP

ALL ML (MICRO-LAMS) TO BE BY TRUS JOISTS

ALL STRUCTURAL STEEL TO BE 36 KSI (TS SECTIONS 46 KSI)

ALL FP (STEEL FLITCH PLATES) TO BE BOLTED W/ 1/2" DIA THRU BOLTS @ 24" OC STAGGERED T+B (START (2) @ 6" FROM EA END)

LOCATE STITCHES AT 1/3 HGT FROM RIDGE

ALL HEADERS (2)2X10 (UON)

PROVIDE 1X4 X-BRIDGING OR SOLID BLOCKING AT 8'-0" OC MAX IN ALL FLOOR JOISTS

ALL LUMBER IN CONTACT W/ MASONRY SHALL BE PRESSURE TREATED

BRACE ALL CORNERS (EXTERIOR /ALL FLOORS) W/ 1/2" CDX GLUED AND NAILED W/ 8D CC NAILS AT 12" OC EXTENDED MIN 4'-0" FROM CORNER EW

ALL STUD WALLS 2X4 @ 16" OC (UON)

BLOCK ALL HEADERS/BEAMS W/ BUILT UP 2X'S OR COL SHOWN ON PLAN TO GRADE OR BEAM BELOW

BEARING CONNECTIONS MAY BE NAILED

ALL OTHER CONNECTIONS TO BE USING METAL JOISTS HANGERS

ALL KNEE WALL CONSTRUCTION SHOULD BE DIAGONALLY BRACED @ 4'-0" OC

DO NOT CUT FRAMING MEMBERS FOR HVAC/PLUMBING/ELEC W/ OUT ALIGNMENT MEMBER TO ORIGINAL CAPACITY (BENDING/SHEAR)

ALL PREFABRICATED TRUSSES SHALL BE DESIGNED BY A PROFESSIONAL ENGINEER AND MANUFACTURED BY A TPI MEMBER

BRIDGE/BRACE ALL TRUSSEES PER MANUFACTURER RECOMMENDATIONS

GENERAL NOTES:

COMPLY WITH ALL LOCAL BUILDING CODES

UTILIZIE A PROFESSIONAL ENGINEER IF CHANGES ARE MADE TO THESE DRAWINGS WITH REGARD TO SIZE, HEIGHT, SPAN, MATERIALS, CONFIGURATION, OR LOADINGS

DESIGN LIVE LOADS: NON-SLEEPING FLOORS (40 PSF)
SLEEPING FLOORS (30 PSF)
ROOFS (20 PSF)
ATTICS W/ STORAGE (30 PSF)
ATTICS W/OUT STORAGE (10 PSF)
EXTERIOR DECKS (40 PSF)

DESIGN DEAD LOADS: NON-SLEEPING FLOORS (10 PSF)
SLEEPING FLOORS (10 PSF)
ROOFS (10 PSF)
ATTICS W/ STORAGE (5 PSF)
ATTICS W/OUT STORAGE (5 PSF)

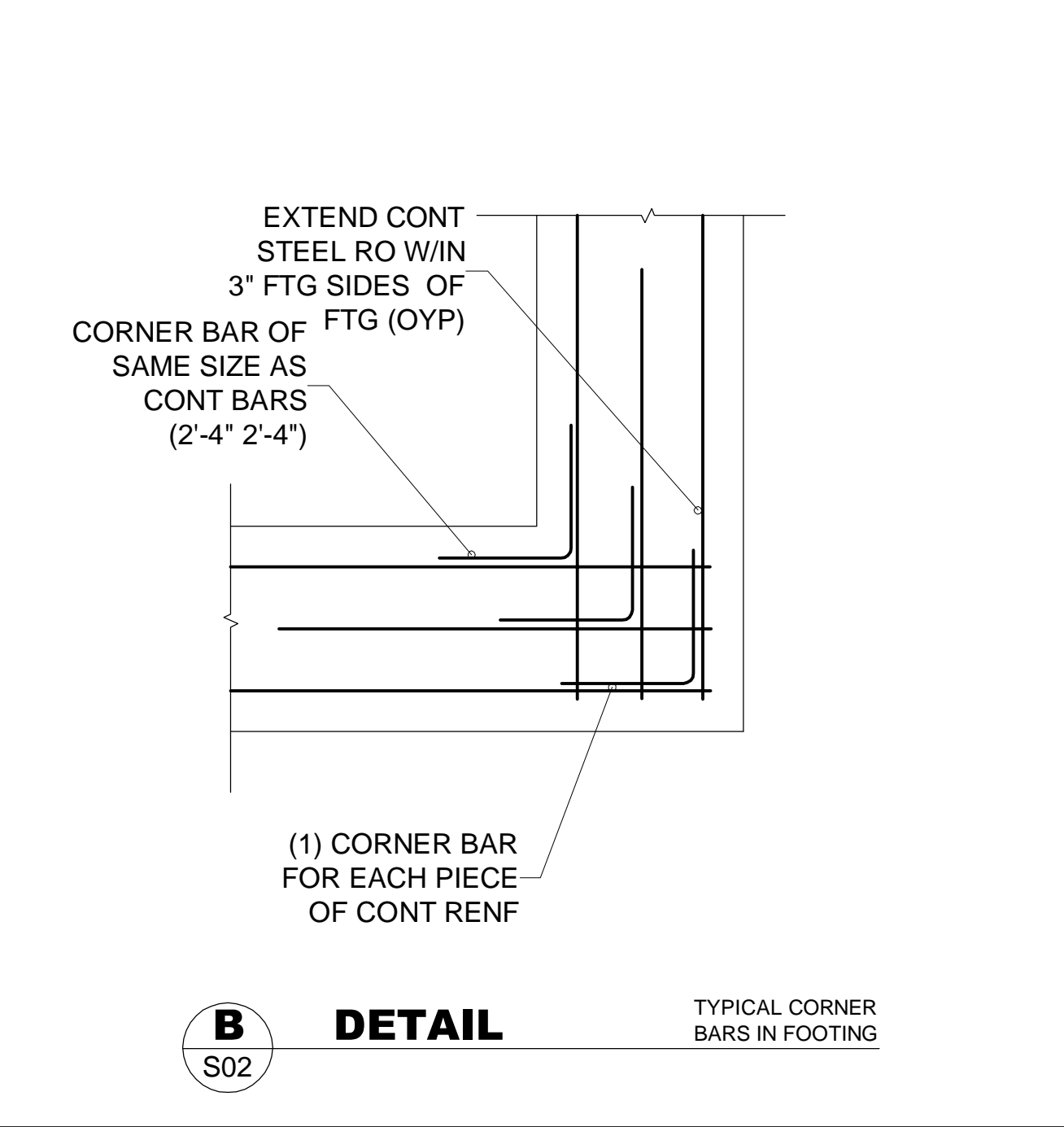
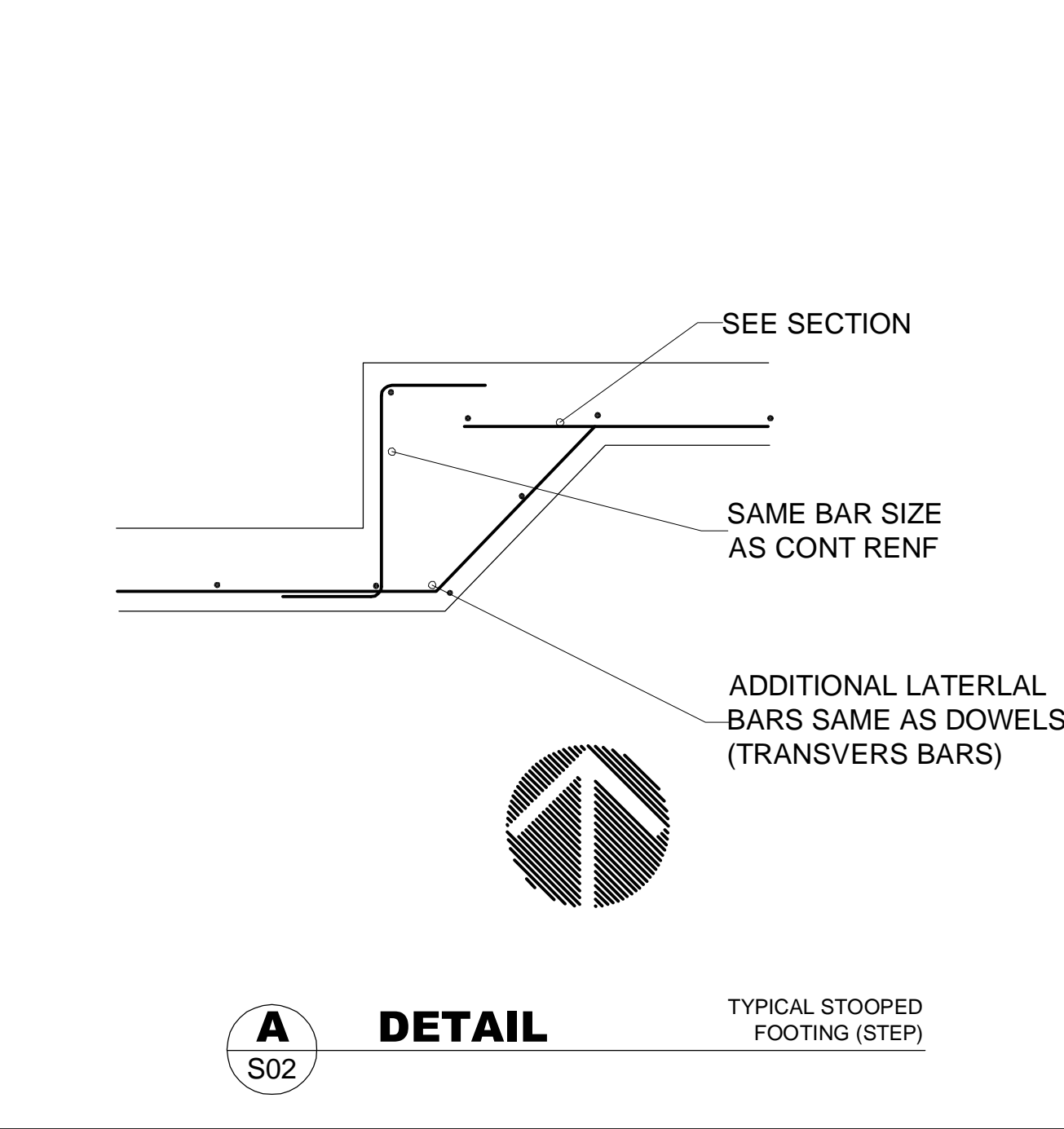
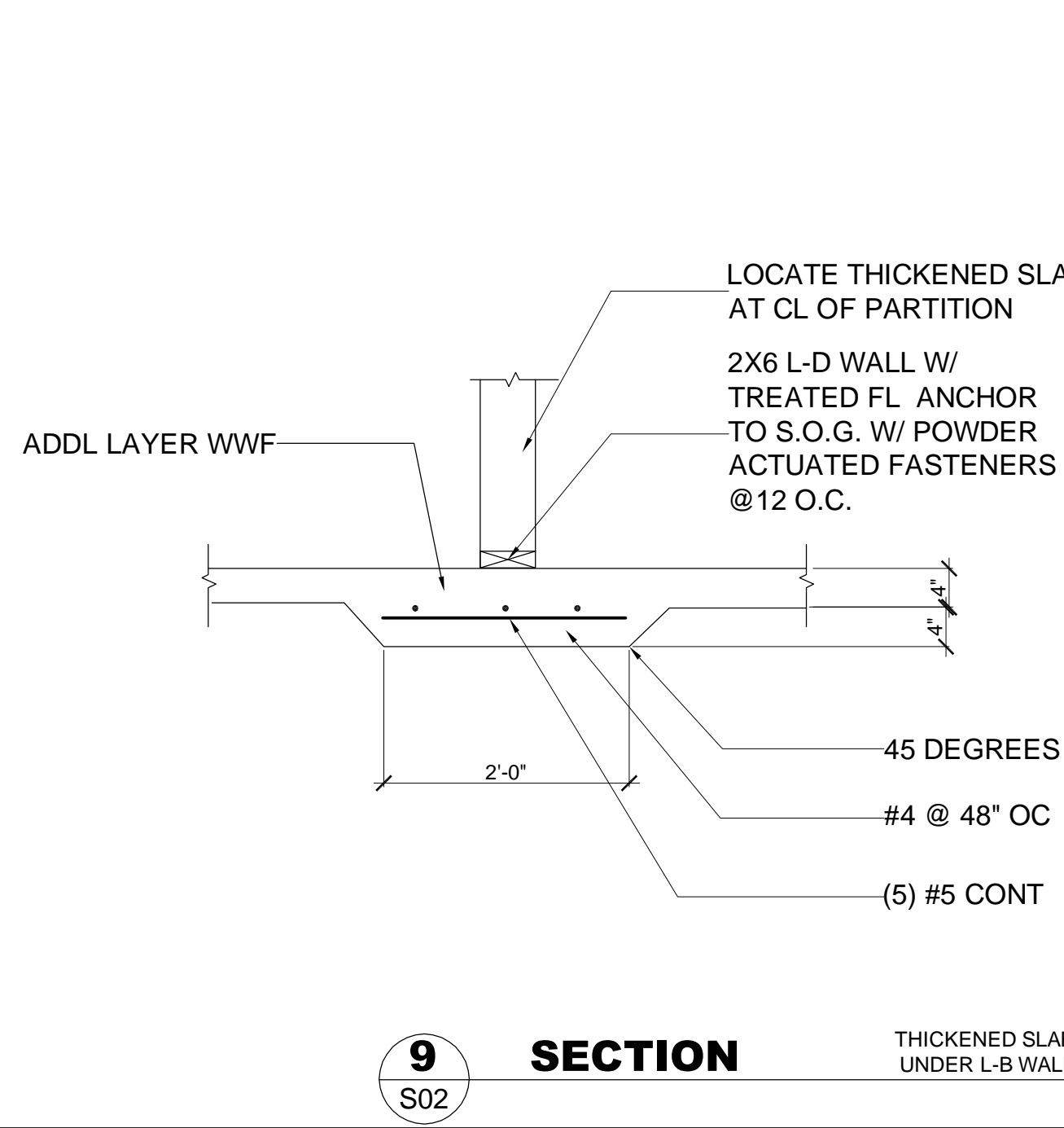
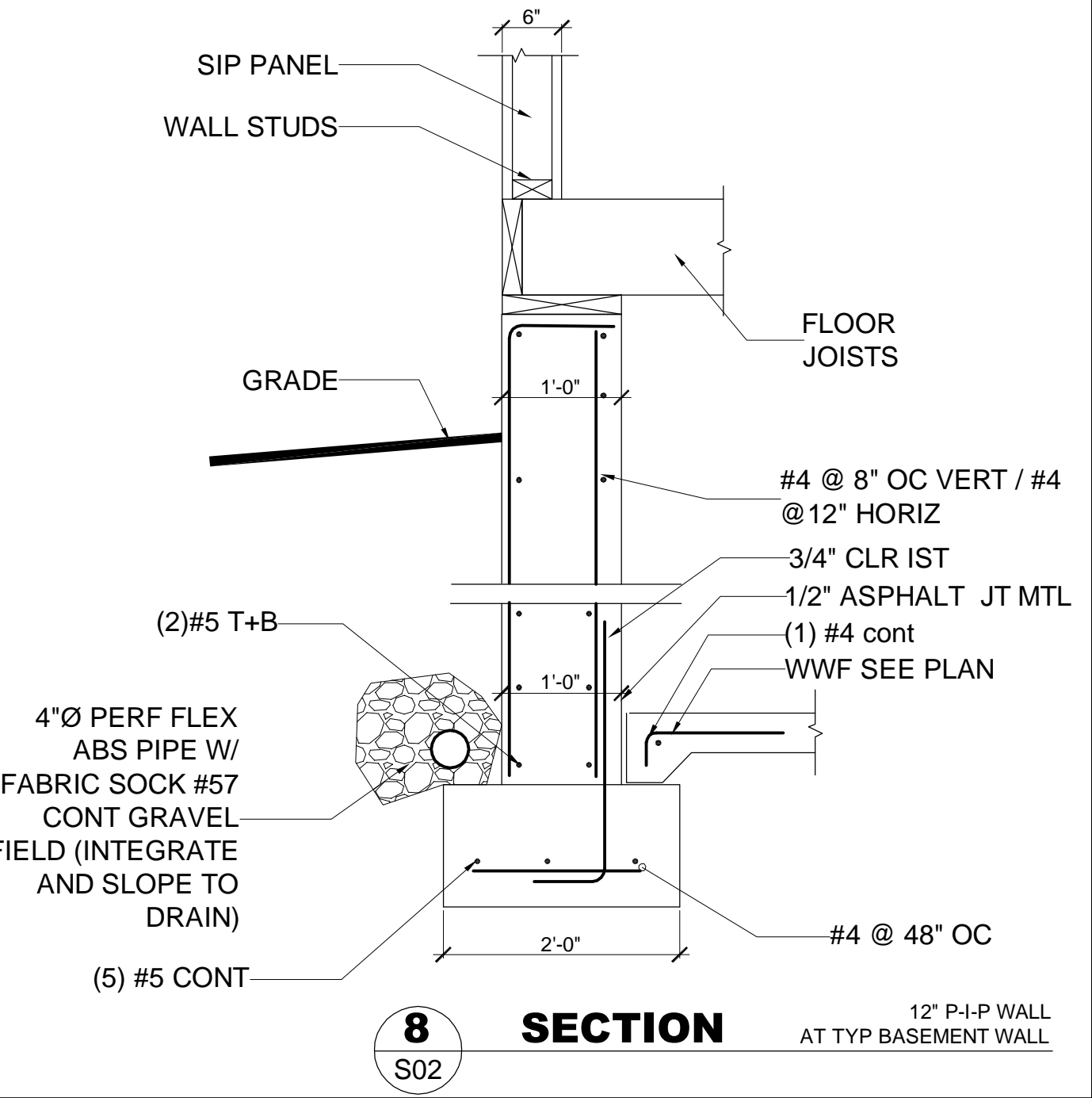
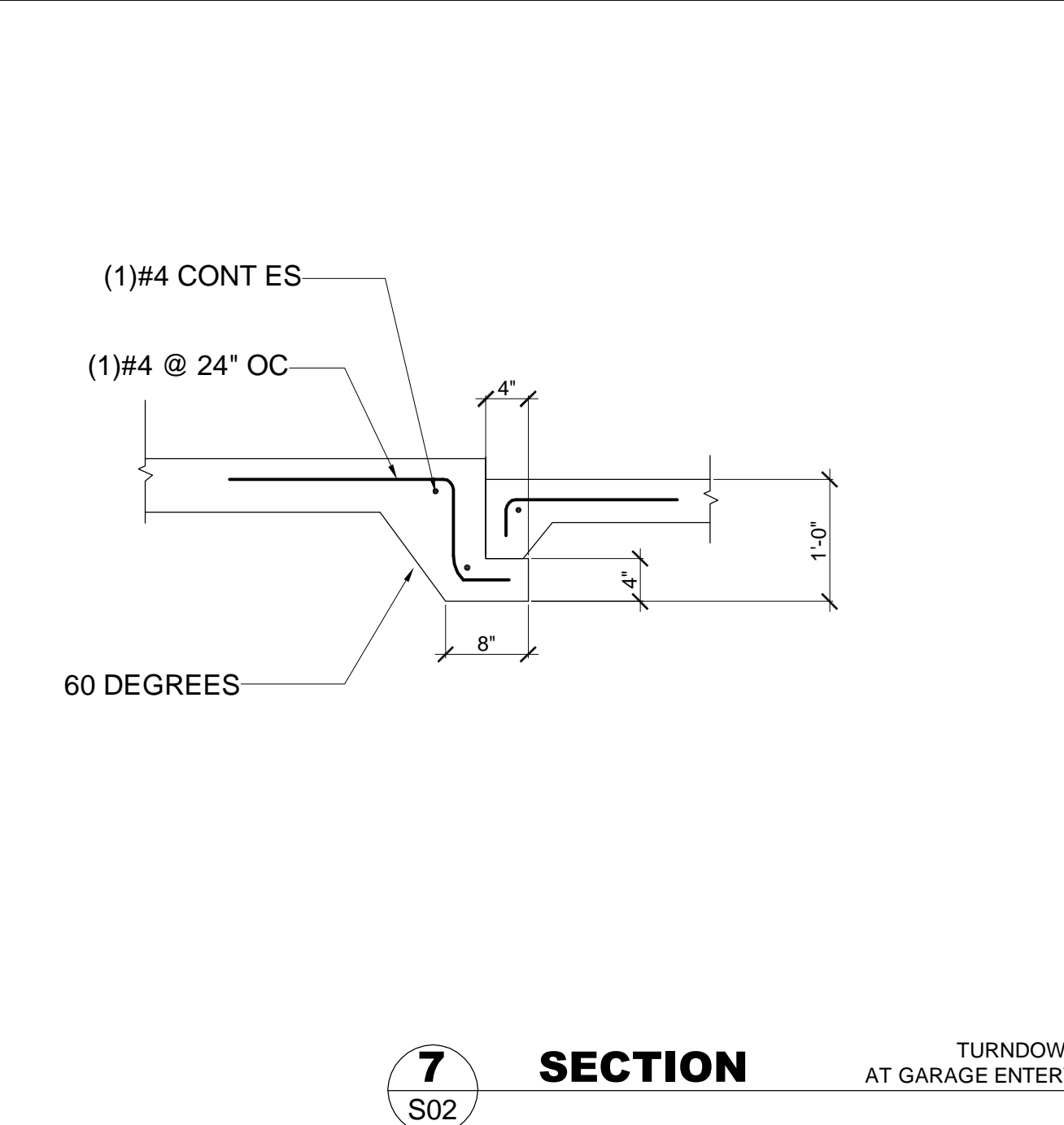
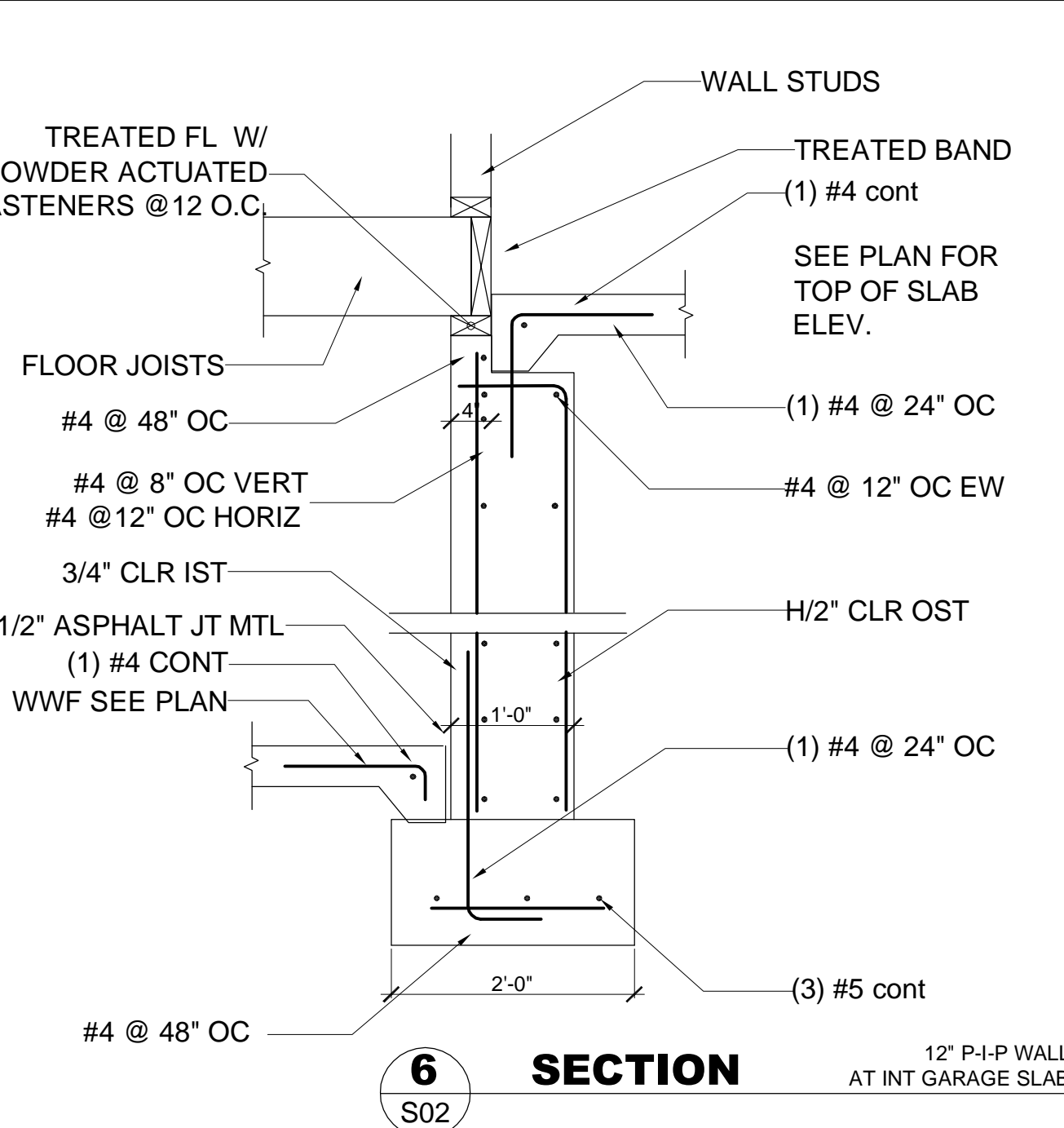
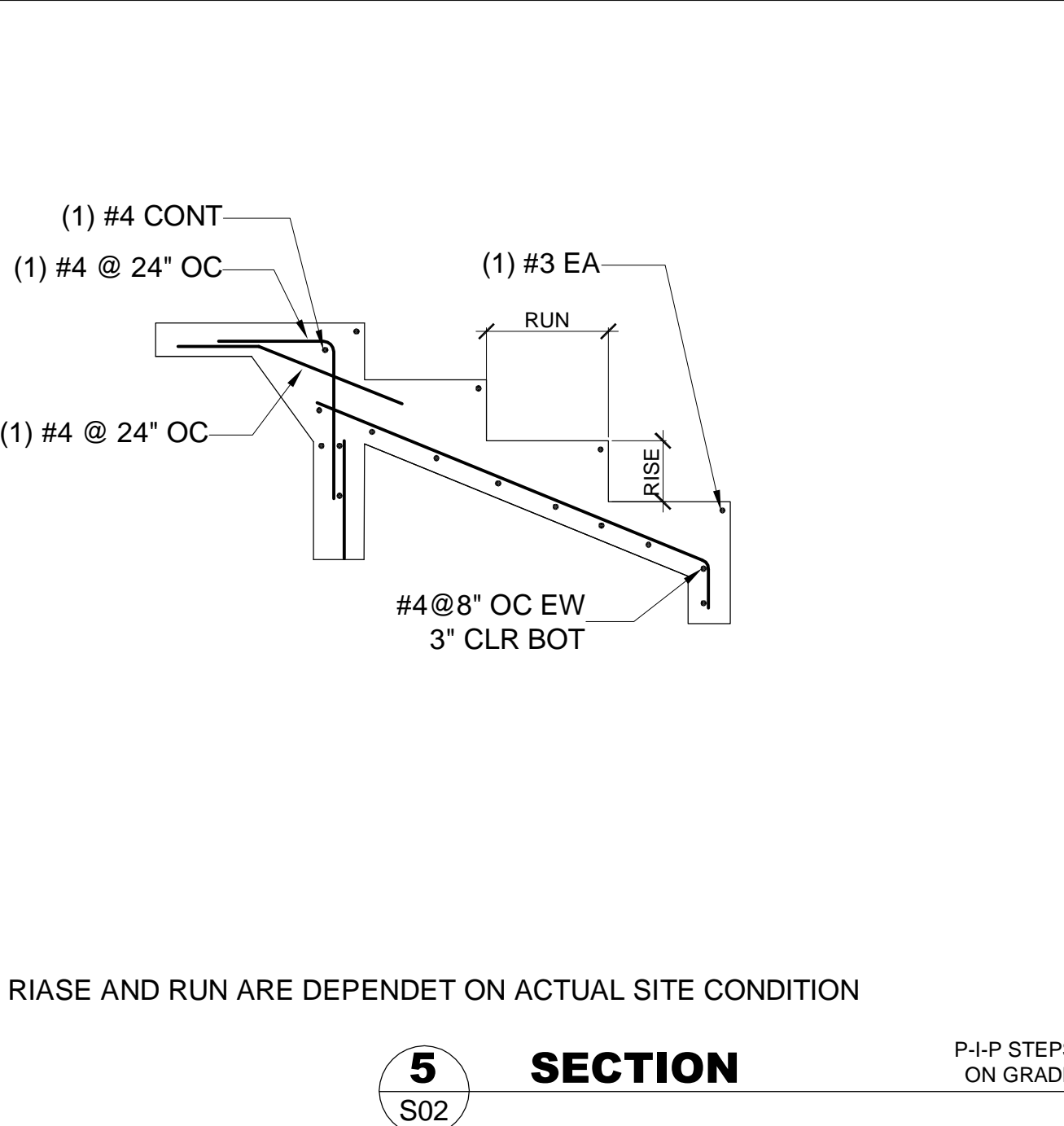
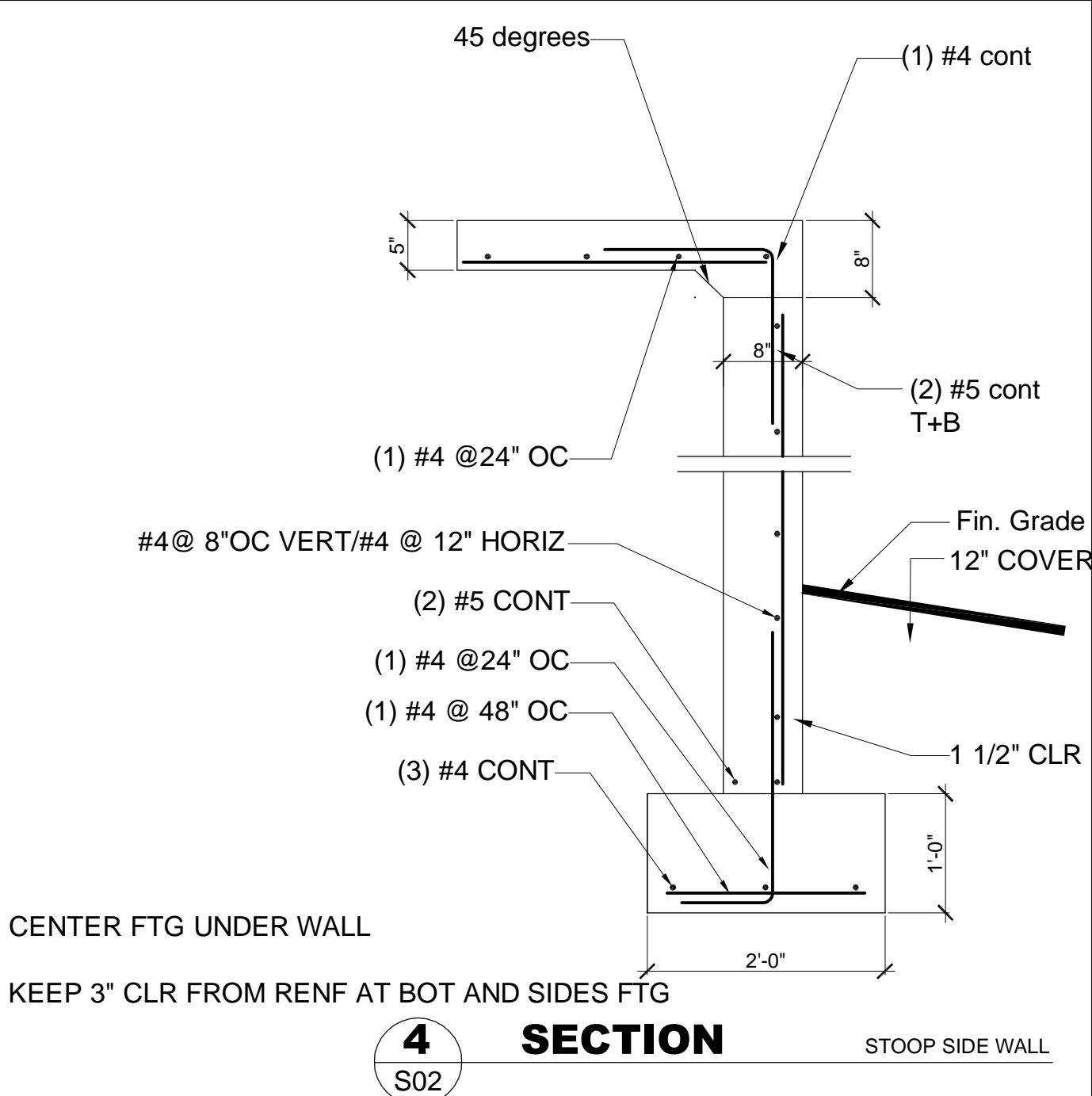
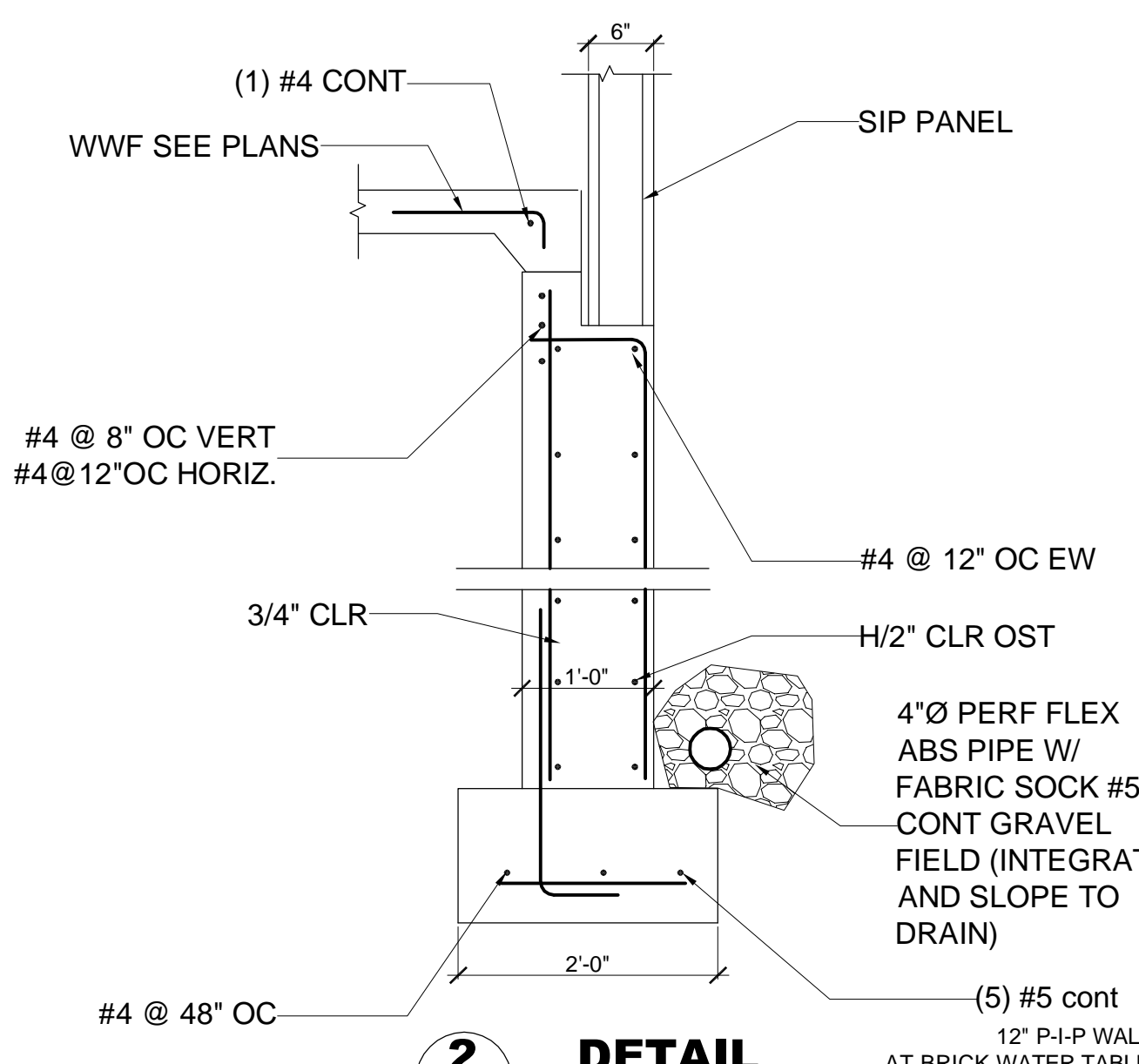
BALLOON FRAME ALL (3) STORY WALLS WHERE LATERAL FRAMING DOES NOT PROVIDE MID-HEIGHT BRACING

IF MULTI-STORY WALLS BECOME CHOPPED UP BY OPENINGS, USE LATERAL STEEL FLITCH PLATES AND/OR 2X6 FRAMINGS

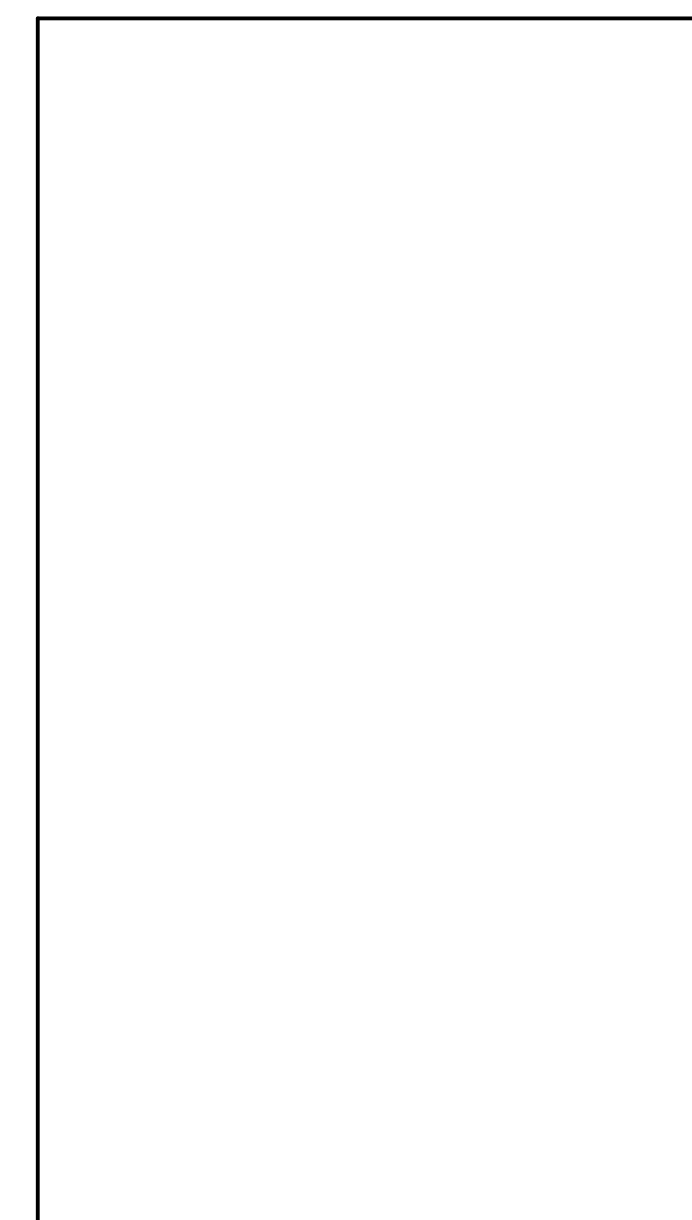
THESE PLANS DO NOT COMPLY W/ SPECS IN REGARD TO SUPPORT OF MASONRY ON COMBUSTIBLE FRAMING. USE NON-COMBUSTIBLE SUPPORT IF BUILT WHERE THE SIBC APPLIES

THESE PLANS ARE NOT SEALED BY A PROFESSIONAL ENGINEER. CONTACT DESIGN TRADITION OR A LOCAL PROFESSIONAL ENGINEER IF THIS IS REQUIRED

USE DOUBLE JOISTS UNDER ALL PARTITIONS PARALLEL TO SPAN OF JOISTS.



#	REVISION /ISSUE	DATE



CONSTRUCTION NORTH TRUE NORTH

cadaxx design
416.628.4851
14 Antibes Dr., Toronto, ON M2R 3K3
www.cadaxx.com info@cadaxx.com

DRAWING

PROJECT:

Mark's House

STRUCTURAL DETAILS

SCALE	
DRAWN	A.A.
CHECKED	
DATE	JUNE, 2006

PROJECT NO.	SHEET NO.
	S3